

# Pearl City Community Church

THE LOVING PRESENCE OF JESUS CHRIST SHARED WITH OTHERS



## INSIDE THIS ISSUE

1 Moderator's Corner  
4 Treasurer's Report  
5 2024 Church Officers  
6 Board of Missions  
13 Visitation Ministry  
17 Board of Deacons  
18 Announcements/  
Upcoming Events

## MODERATOR'S CORNER

*Dominic Inocelda*

**Hope for the future requires change in the present.**  
*(Quote unknown)*

In remembrance of Clay Kimoto's work and focus on better clarifying PCCC's Vision and Mission I would like to acknowledge the effort that the previous strategic planning committee was working on prior to Clay's passing. As the importance of the tasks was not diminished by Clay's passing, the church Council re-established a Strategic Planning Subcommittee at the beginning of this year. This subcommittee has continued to grapple with the question "What is the purpose of Pearl City Community Church or why does PCCC exists?" The subcommittee understood that in answering the question of why we exist, we would have guidance in answering what the church should be doing in the present and

the present and in the future. The subcommittee was formed to complete a strategic planning process and to explore questions about the church's financial and property assets and to present possible alternatives for current and future use of the church's assets. In trying to answer some of these questions, the subcommittee reflected back on the church's current vision and mission statements which are as follows:

**Vision-** PCCC, the loving presence of Jesus Christ shared with others.

**Mission-** PCCC, Learning about God through His Word, Loving through Jesus Christ, and Living by the Holy Spirit

And, as stated in the **PCCC By-Laws** the purpose of the church is to:

Proclaim the Gospel of Jesus Christ,

Declare that the Bible is the source and foundation of our Church life,

Promote and realize Christian fellowship,

Nurture children, youth and adults in the Christian faith,

Worship God and celebrate the sacraments; and Respond to and act out God's call as servants/disciples/disciple makers to the world.

Although it may seem straight forward as to what the church is about and how it should be living out its vision and mission, we needed to reflect on what major goals and priorities the church, as a whole should agree upon given the current resources, experience, time, place, and capacities of the church. And at a much deeper level, is the question what is God's plan for His church at Pearl City and do we have ears and eyes to sense what His plan may be as a body of Christ at PCCC. The subcommittee has been seeking a process that will offer the congregation the opportunity to also grapple with the questions regarding purpose and current and future planning for the church.

Through seeking input and guidance from persons familiar with strategic planning, property development, and asset management, the subcommittee became aware of the need to have professional guidance and expertise to move forward. The subcommittee reached out to a number of strategic planning facilitators/consultants to gather more information and direction. We were also trying to identify possible planning consultants that the church might contract with. Throughout this year, the subcommittee has also been in contact with Josh Hayashi and David Oyadomari of Mission Management Company whom the church contracted to complete a church audit that provided information about the church's current status, financial condition, and readiness to change. This audit helped the church leadership to realize **that vital changes were needed at this current time** if the church wants to continue to carry out its mission and vision into the future. PCCC is at a fork in the road, what we do now will make a difference in PCCC's future ability and capacity to carry out its vision and mission.

In the church's 2024 budget, an amount of \$50,000 has been allocated to reach out and contract with a planning consultant. The subcommittee is in the current process of recommending a planning consultant to the Council and hopefully with Council's approval, a recommendation will be made to the Congregation. If approval to contract with a planning consultant is made by the congregation it is anticipated that a planning session with an invitation to all members and friends of the church will take place to keep everyone informed of what to expect and to clarify the major goals and priorities of the church.

As I had promised at the last Congregational meeting on December 3, 2023, a written document is being developed to try to answer questions about the need for changes at this time, potential opportunities for the church to further its ability to carry on missions, what the consequences may be if no or very limited changes are made, what the planning process will entail, what kind of changes can we anticipate, and what is expected of us as members and friends of Pearl City Community Church. This document is expected to be available by mid-January 2024.

**Other Important Points of Information:**

Status of the Pastoral Care Minister position- At this time there have been no applicant referrals from the UCC Conference. Pastor Popham, Conference Minister, noted that four possible candidates were contacted but there were no applicants. An inquiry with a non UCC pastor who is known to the church is being considered and in tentative discussion. Pastor Sharon Inake has expressed interest in providing some pastoral care services on an as needed bases and may be able to assist with the development of a church membership process. Representatives from the Personnel and Visitation committee will be following up with both pastors.

Pastoral Supply- Mylene Ibera and the Deacons have developed a list of supply pastors up to the end of February 2024. Church leaders have been asked to provide leads to Mylene of trusted pastors that could provide sermons beyond February 2024.

Pastoral Search Committee- The Council will be establishing a Pastoral Search Committee in January 2024. The council will be seeking congregational members who would commit to becoming a member of the Pastoral Search Committee. According to the current by-laws, the committee must have a membership of at least nine and not more than twelve active members.

**Wishing All a Happy New Year**

May the Gospel of Jesus Christ be the bases for our own meaning and purpose in living this life. May thankfulness drive us to see life as an opportunity to care and serve others. And may faith, hope, and love be the stepping stones to God's promise that "I have come that you may have life abundantly". Happy New Year to All.



## TREASURER'S REPORT

*Pearl Yamanouchi*

### TREASURER'S NOTES...IS PCCC LIVING WITHIN ITS MEANS?

During a recent council meeting, someone reported that a church member asked why the church is NOT living within its means. This query happened at the last congregational meeting to elect officers and to approve the 2024 budget.

The proposed budget of \$866,717 was sent to all members of the church prior to the meeting. This mailout is to ensure that members have time to examine all the assets of the church, all of the different types of income, and all the budgets of the different committees and boards. The budget included total income of \$431,700 and investment withdrawals of \$265,017. Projected expenses totaled \$866,717.

During the meeting I had explained that the main sources of income for PCCC come from tithing and rent from the properties. Since the total of these sources were insufficient for the projected expenses, we need to withdraw money from our investment funds, an amount of \$265,017.

What does "living within its means" really mean? Does it mean that our budget should be limited to the total income of \$431,700? The trustees' budget is \$308,310. This amount alone is 71.4% of the income. Trustees are responsible for the upkeep of the church's facilities and maintenance of the properties. Should the other committees or boards no longer exist because there's no income to support their causes? Conversely, if PCCC's income were used to support the church's activities, will the facilities and properties be in disarray for lack of maintenance if funds were unavailable? If these scenarios prevailed, I would expect major backlash from the affected members.

I recently read an article with the following definition "living within your means, means managing your..finances and...expenses in a way that aligns with your income and available resources...It is about making choices that fit within the boundaries of your financial resources."

Our investment funds are one of our biggest resources, much of which were donated to the church. By using these funds, the church can continue to support the boards and committees to carry out their missions. These funds are an integral part of the church's ability to serve the congregation and community. Therefore, the church will continue to utilize its investments in a responsible manner to ensure their sustainability in the future.

The article also stated that living within your means has the following criteria: 1) have financial goals 2) save for the future and 3) avoid unnecessary debt. Let's see whether PCCC fulfills these standards.

PCCC is in the process of creating a vision of the church using our existing properties. This is a goal that will require substantial resources. In the long run, the church needs to be financially sustainable in order to complete its vision statement. Our investment funds are aligned to meet current and future needs.

In 2021, PCCC acquired three properties and sold one. We were so blessed because we managed to pay off the mortgages and still have money left to invest. Isn't it amazing that the church has no debts?

Based on the above, PCCC is definitely living within its means. But can it continue to do so? I commend the congregation for its generosity and faithfulness in supporting the church. With your continued support, the church will surely have a solid financial footing going forward into the future.

### 2024 PCCC CHURCH OFFICERS



**Dominic Inocelda**  
Moderator



**Anson Murayama**  
Vice Moderator



**Sharon Moy**  
Recording Secretary



**Pearl Yamanouchi**  
Treasurer



**Jean Kimoto**  
Historian



**Shirley Ota & John Bartsch**  
Members-at-Large



**Frida Burleson & Nadine Takahashi**  
Financial Secretaries



## ENHANCEFITNESS

*Board of Missions*

### EnhanceFitness Participants

.... Sharing laughter, the day before Halloween



Sue, Frances, Paulette, Shirley, Sharon, Irene, Maude, Karen, and Geri.

Did you taste the yummy Lilikoi tart that Sue brought and the mochi Karen made?



Irene, Sharon, Sha, Paulette, and Spam Musubi Cindy

## Joy .... You feel it all around



Mylene and Sha ... Were they distributing treats ... or tricks?





Millie, Arnold, Jackie, Cynthia, Shirley, Jane, and Nancy.

Mahalo Ben for preparing the tasty strawberry shave ice!

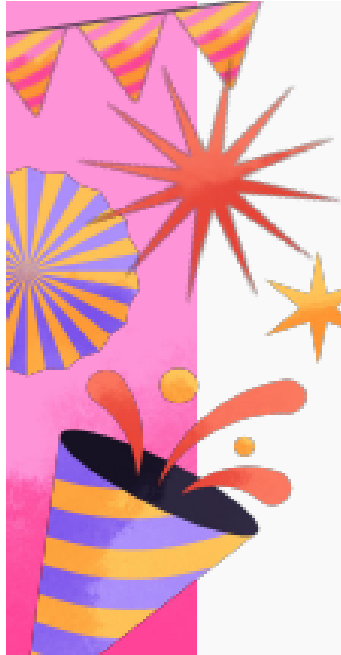
***This is my kind of cool down after a workout.***

We are grateful for the partnership we have with the YMCA of Honolulu and University of Hawaii-Center on the Family, and the partial funding from the Atherton Family Foundation to enable PCCC to offer EnhanceFitness in our community.

~~PCCC's Board of Missions



December 15, 2023



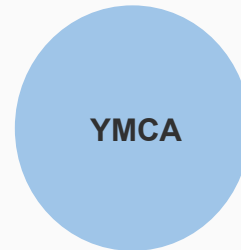
## EnhanceFitness at Pearl City Community Church



### EnhanceFitness = evidence-based fall prevention exercise program

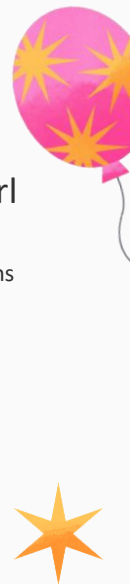
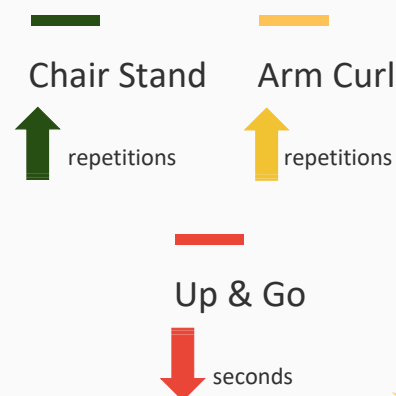
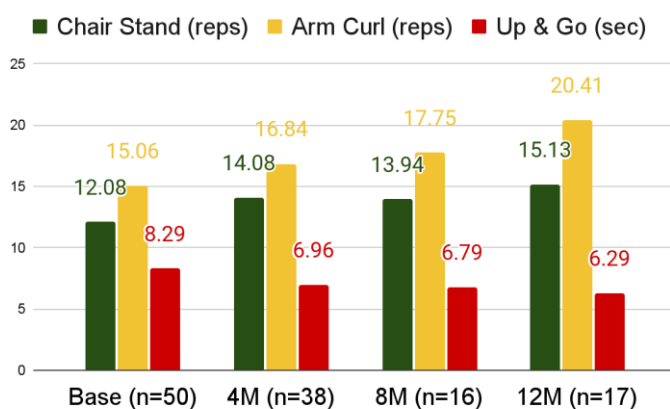
- Designed by the University of Washington.
  - Focusing on overall flexibility, balance, and endurance.
  - 1-hour X 3 days/week.
- Approved by the U.S. Administration for Community Living.
- Endorsed by the Centers for Disease Control and Prevention.
- Shown positive outcomes in any locations.
- Annual medical saving = \$945/person (CMS study).

Built on a  
partnership for  
collective impacts

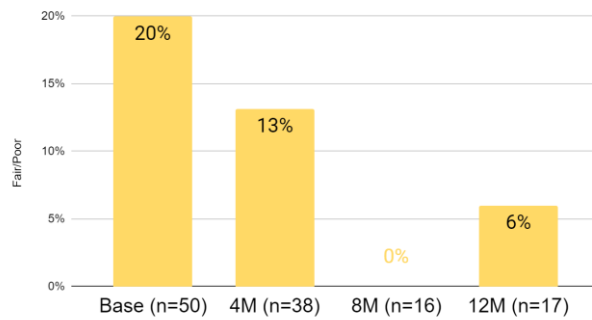


**As of today, PCCC has served 50 Na Kupuna**

Conducted follow-up assessment every  
4 months

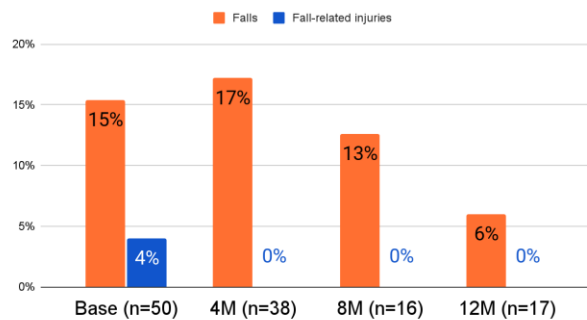


Proportion of Participants Reported Fair/Poor Health



## Feeling healthier!

Prevalence of Falls and Fall-Related Injuries



## Prevented falls!

## How does EnhanceFitness help?

Increase my ability to do more things, keep up my stamina and strength, and always be careful not to fall

Lower my high blood pressure and cholesterol to become almost normal

Build my confidence in volunteering at the church

Improve my agility, making undertaking household chores easier and safer

Increase my stamina for walking without getting out of breath

**WE ARE THANKFUL FOR OUR STRONG PARTNERSHIP  
AND THE POSITIVE OUTCOMES ON NA KUPUNA'S HEALTH**







## VISITATION MINISTRY

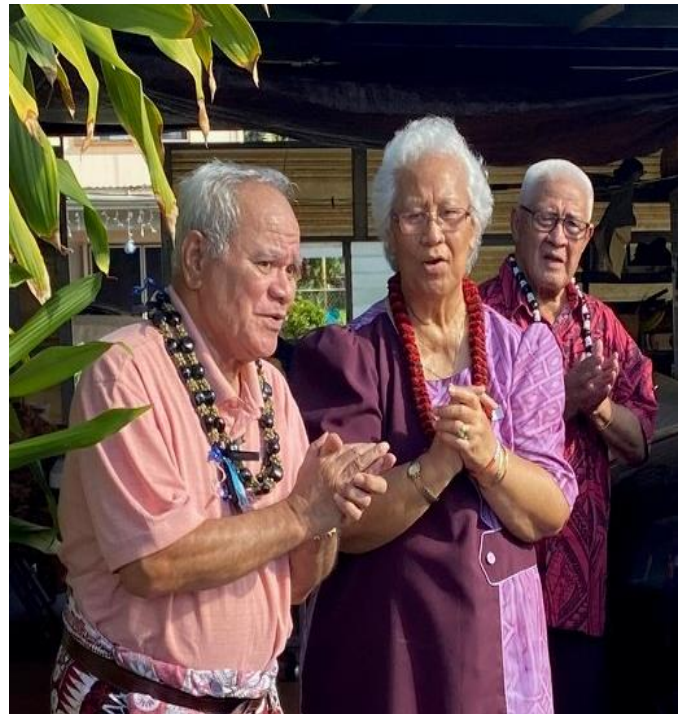
*Geri Ihara*

### **Christmas Caroling on the Holly, Jolly Trolley**

It's easy to get caught up in the hustle and bustle of the holiday season and miss what this special time is all about ... to help others through selfless acts of kindness. The joy of PCCC's Christmas caroling on the trolley is all about filling hearts around us with peace and love, and offering prayers for those in need, for their well-being, and for the light of compassion to guide their paths.

PCCC family and friends boarded two trolleys for a spirit-filled journey throughout the Pearl City/Aiea community. One of the most inspiring things about the Christmas season is the music ... the perfect mood-setter for celebrating the birth of Jesus Christ. Songs like "Go Tell It on The Mountain, O Come All Ye Faithful, Joy to the World, Silent Night, etc." along with the beautiful Christmas banners displayed on the trolleys, give a shout out of the true meaning of Christmas.

The trolleys made 10 visitation stops at church members' homes to deliver God's love and a boost of hope for renewal, restoration, and healing. Thank you, Craft Ministry, for handcrafting 12 beautifully decorated crocheted Christmas trees as gifts of love for those we visited.









As passengers disembarked the trolley, they were invited to refreshments in Higuchi Hall. Michiko Iguchi was invited to join the merriment. At 103 years old, her laughter continues to echo. It was heartwarming to see Michiko's face light up as she joined the group in singing Christmas carols. She truly has a heart that loves deeply, inspiring all who are fortunate to know her.





***God's plans might be hard to predict but never hard to trust. Please carry this message in your hearts as we welcome a beautiful new year."***

If you are interested in serving on Visitation Ministry or if you know of anyone in need of prayer, please call the church office @ (808) 455-4148.

You don't need a planned program to visit someone. Just being there matters more to them than what you do or say. Your presence communicates that you care and that is the bottom line in visiting someone in need.



## BOARD OF DEACONS

*Shirley Ota*

### Current activities of the Board/Committee

1. Bought Areca palms to decorate the lanai.
2. Communion has returned to the original distribution of communion elements.
3. Bought 98 poinsettias to decorate the sanctuary with the help of PCCC and Nu'u Lotu members.
4. Honorarium continues to be taken care of by the Deacons.

### Prayer Request:

1. Could use more Deacons.
2. When approached by Deacons to assist please consider.
3. More united experiences with Nu'u Lotu Church.





## ANNOUNCEMENTS/UPCOMING EVENTS

### Steve Kawamura's Servant Leadership Workshop

The workshop will be held at **PCCC** on **Saturday, January 6 from 9:30 to 11:00 am**. It is open to anyone who is interested in discovering the biblical motivation of service and what it means to be a servant leader. Steve Kawamura is a missionary in Brazil supported by Hui Lokahi and the Board of Missions.



**All Welcome!**

**Kupuna Hugs invites you!**

**Thursday, January 4 at 11:00 AM to 2:00 PM in Higuchi Hall.**

**Lunch included.**

It's all FUN and GAMES until someone....  
YELLS.... HALLELUJAH.

For more information contact Ben Gabriel, Jr.  
at (808) 455-4148.

### ANNUAL REPORT

**To: All Boards, Committees and Ministries**

The deadline to submit your annual report is on **Friday, January 5, 2024**. Please email to [mylene@pccc-hi.org](mailto:mylene@pccc-hi.org). Mahalo!

### **SCHOLARSHIP:** Applications for \$500

Scholarships are available at the church website at

<https://www.pearlcitycommunitychurch.org/scholarship-application-2024.html>.

PCCC members, their dependents, or active participants of PCCC may apply. Applicant must be an Oahu high School senior with a Cumulative GPA of 2.5 or higher and will be an incoming college freshman at a four-year university, private college, community college, vocational or trade school.

**Applications are due on Wednesday, May 1, 2024 by 3:30 PM to the church**

**office.** For more information, please email Carol Iboshi at [ctiboshi@gmail.com](mailto:ctiboshi@gmail.com).



After careful consideration and in light of the 2024 Western Regional Youth Event being unable to secure a venue for their event, the **White Elephant planning committee decided to postpone the 2024 White Elephant event until a later date.** With a grateful heart, we thank everyone for volunteering for the event. We look forward to holding the White Elephant event at a later time. Mahalo!



**Pearl City Community Church**  
**933 Lehua Avenue Pearl City, HI 96782**  
**(808) 455-4148**  
[www.pearlcitycommunitychurch.org](http://www.pearlcitycommunitychurch.org)